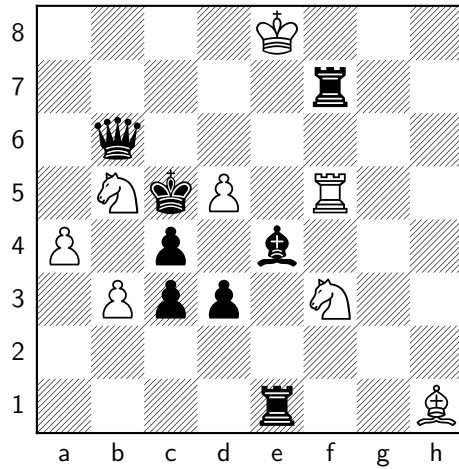


*StrateGems*, October-December 2014

Helpmate in Two

B. f5R → e2



**Solution:**

(A) 1. Bxd5+ Se5 2. Be6 Sxd3 mate.

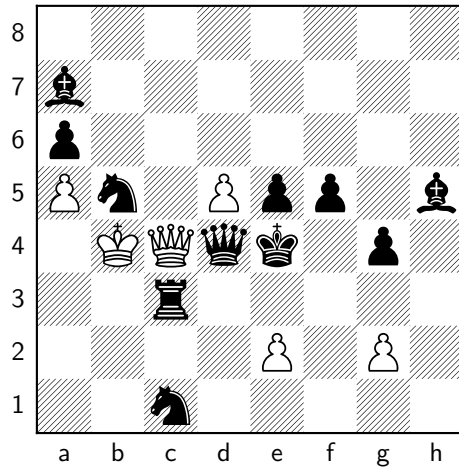
(B) 1. Bxf3 Re4 2. Be2 Rxc4 mate.

Lots of pinning and unpinning, but not terribly harmonious.

*StrateGems*, October-December 2014

### Helpmate in Three

B. e2P → d2



**Solution:**

(A) 1. Kf4 e4 2. Qe3 Qc8 3. g3 Qxf5 mate

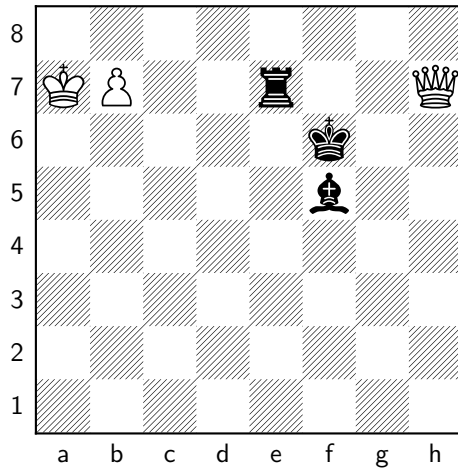
(B) 1. Bc5+ Ka4 2. Bb4 Qxc3 3. Qxd5 Qe3 mate

One of the kings must give way to make it possible to unpin the queens.

*Aurél Kárpáti-75 Jubilee Tourney, 1994*

**First Honorable Mention**

**Helpmate in Two. Two Solutions.**



**Solution:**

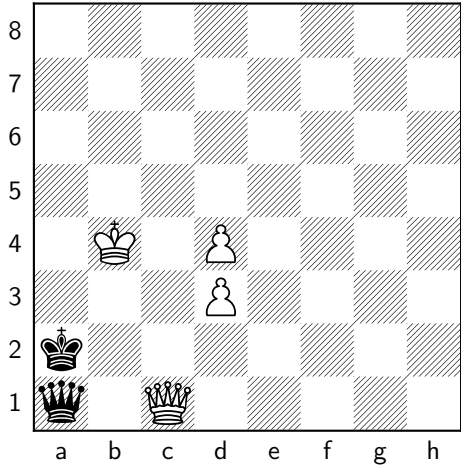
**1. Bd7 b8Q 2. Re6 Qf4 mate.**

**1. Re5 b8Q 2. Be6 Qd8 mate.**

Black Grimshaw introduced by critical moves. The theme for this tourney called for miniature helpmates in two with white pawn promotion.

*The Problemist*, November 1991

Helpmate in Two. Two Solutions.



Solution:

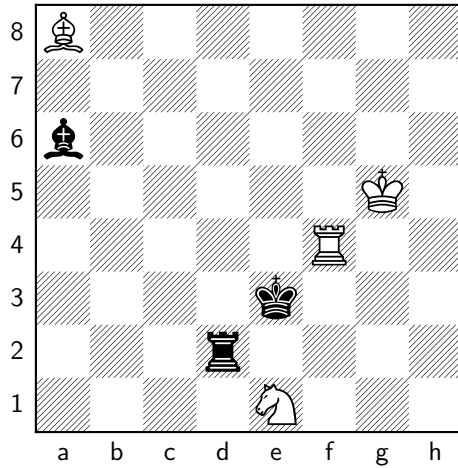
- 1. Qb2+ Ka4 2. Qb1 Qa3 mate.
- 1. Qb1+ Kc3 2. Qb2+ Qxb2 mate.

Miniature with reciprocal black queen moves.

*Chess Life*, August 1990

**Helpmate in Two**

- (B) e1S → e2
- (C) e1S → c3
- (D) e1S → g6



**Solution:**

- (A) 1. Rf2 Rd4 2. Be2 Sc2 mate.
- (B) 1. Bd3 Sg3 2. Re2 Sf1 mate.
- (C) 1. Rd4 Rf2 2. Bd3 Sd1 mate.
- (D) 1. Be2 Se6 2. Rd3 Sc4 mate.

Two black Grimshaws in a pawnless, miniature setting.

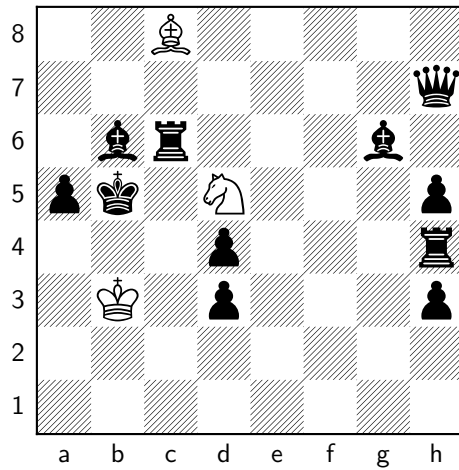
*Chess Life*, August 1989

### Helpmate in Two

Zeroposition

(A) c8B → g4

(B) d5S → c5



**Solution:**

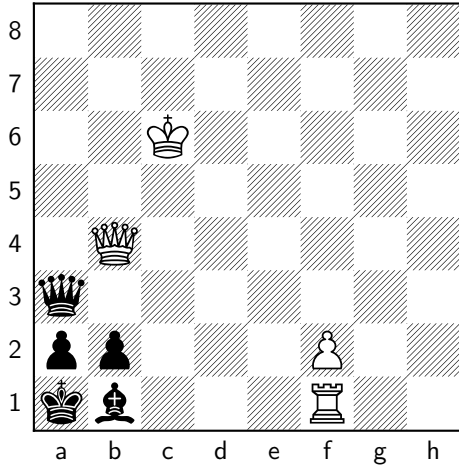
(A) 1. Bc5 Be2 2. Re4 Bxd3 mate.

(B) 1. Be4 Se6 2. Rc5 Sxd4 mate.

Two mixed, black Grimshaws.

*Chess Life*, April 1989

**Helpmate in Two. Two Solutions.**



**Solution:**

- 1. Qa5 Rxb1+ 2. axb1R Qxa5 mate.
- 1. Qa7 Rc1 2. bxc1S Qc3 mate.

Black underpromotions with white rook sacrifice and a careful choice of destination for the black queen. My first published problem that was entirely my own work.