

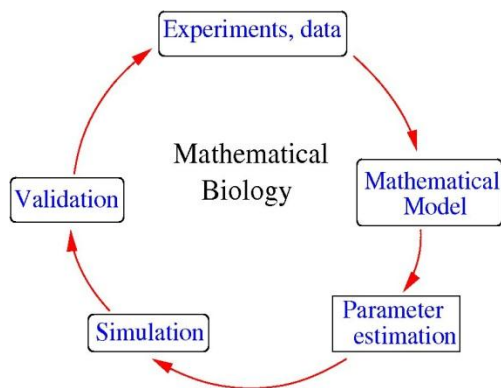
James Madison University

Sponsored by the College of Science and Mathematics

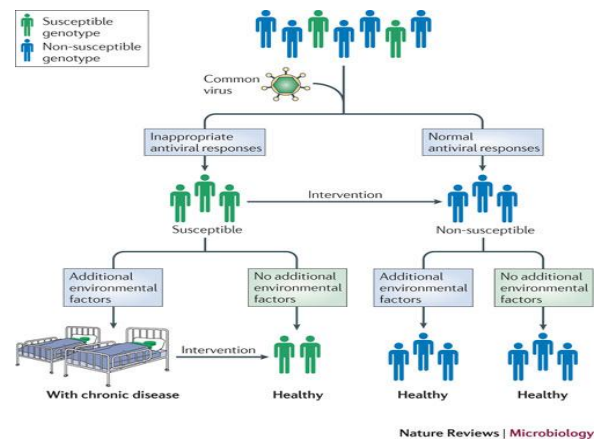
An Introduction to Math Biology: From College Algebra to Differential Equations

Luis Melara, Shippensburg University

Abstract: Mathematical biology is an active area of research in applied mathematics. Applications of mathematical biology include, but are not limited to, population modeling, physiology and spread of diseases. In this talk, the speaker will present a brief introduction to mathematical biology using concepts from college algebra, single variable calculus and differential equations. Then the speaker will provide an overview of his professional experiences using mathematical biology to engage undergraduates in research. Examples of previous projects will be presented.



<http://www-personal.umd.umich.edu/~yangjink/MathBiol.jpg>



Nature Reviews | Microbiology

Monday, March 2 at 7:00 pm in Burruss 31, refreshments at 6:45
For campus map and parking information see: www.jmu.edu/map/regions/north-campus.shtml