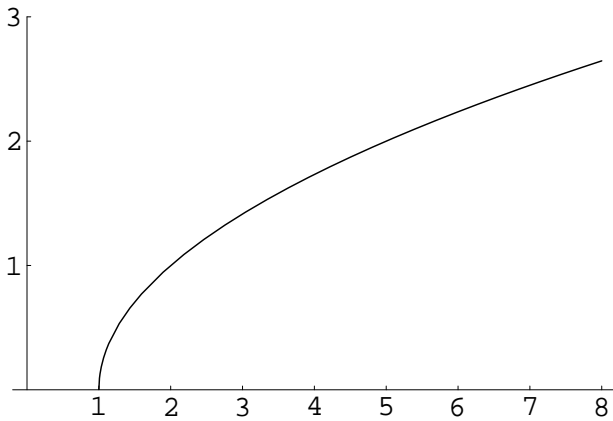


This quiz is worth 10 points and you have 10 minutes to complete it.

Calculators ARE allowed today.

1. (10 pts) Find the largest value of δ for which $0 < |x - 5| < \delta \implies |\sqrt{x-1} - 2| \leq 0.5$.

Make sure that I can tell exactly how you arrived at your answer. It may help to show some of your work on the graph of $f(x) = \sqrt{x-1}$ provided below.



Final answer: $\delta =$ _____