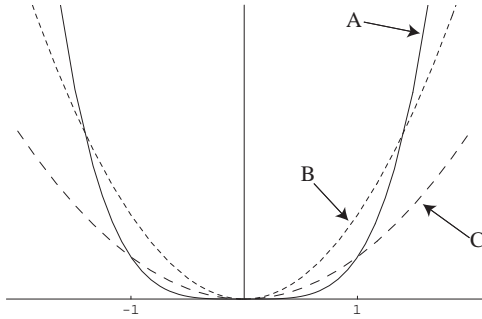


This quiz is worth 10 points, and you have 10 minutes to complete it.

Calculators are NOT allowed today.

1. (3 pts) The following plot shows the graphs of $y = x^2$, $y = x^4$, and $y = 2x^2$. Determine which graph must be which.



Graph "A" must be the graph of _____ .

Graph "B" must be the graph of _____ .

Graph "C" must be the graph of _____ .

2. (7 pts) Sketch graphs of each of the following. Label the coordinates of one point on each graph. Please make your graphs readable, and not too small!

a. (2 pts) $f(x) = (x - 2)^3 + 1$

b. (2 pts) $f(x) = -5x^6$

c. (3 pts) $f(x) = \frac{1}{2x^5}$